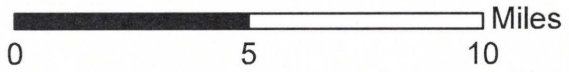




Project Location  
 Lat: 27.841435  
 Long: -97.064432



★ Robert's Point Park Pier      □ County Boundary



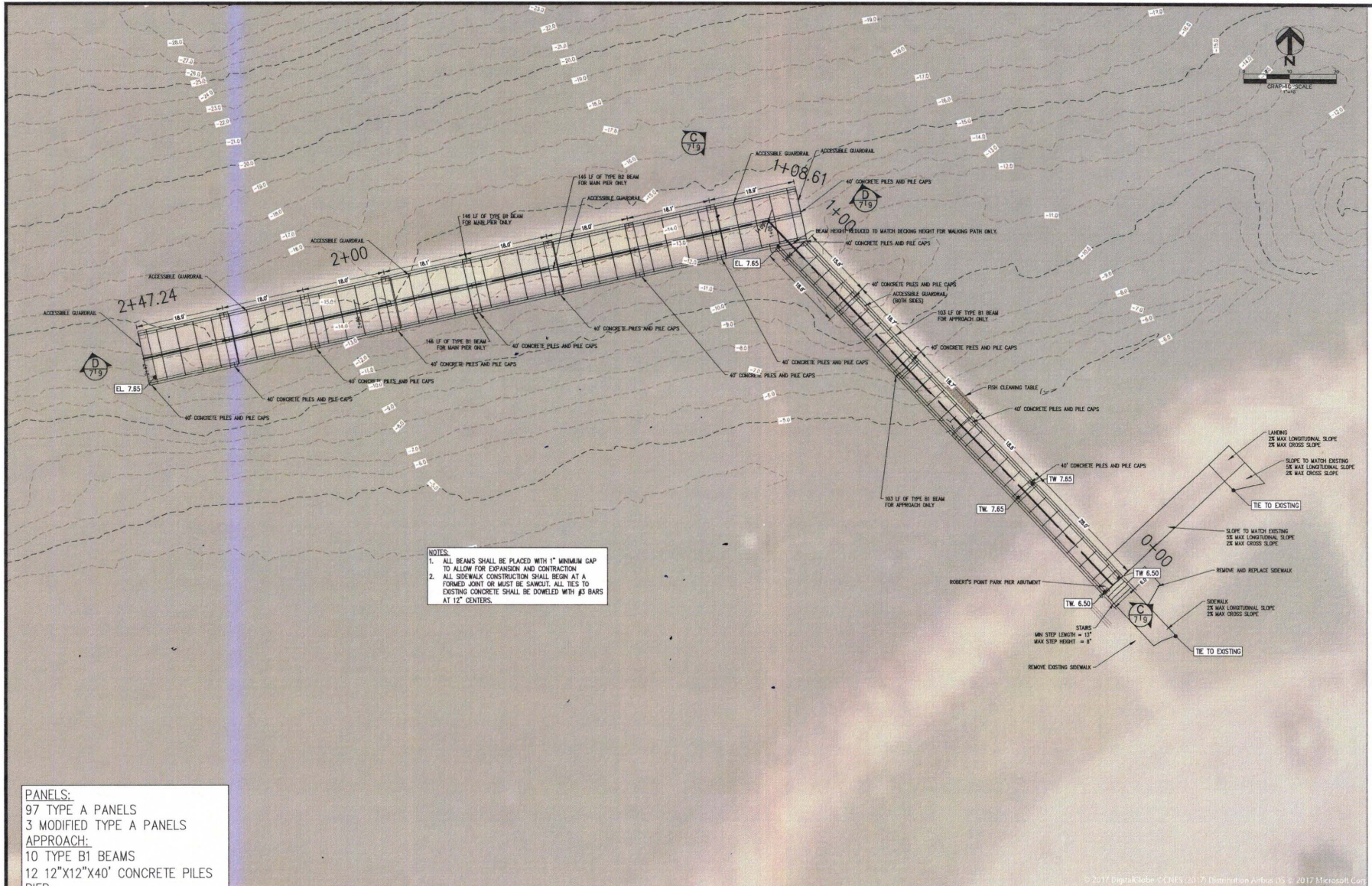
Vicinity Map  
 Robert's Point Park Pier Restoration Project  
 City of Port Aransas  
 Nueces County, Texas

Page 1 of 1	Scale: 1:250,000
NAD 83 TX SC ft	Date: May 2019

PROJECT SW6-2019-00349  
 SHEET 1 of 5



S:\Projects\Uppoco\Urban\06100\B719\Design\Robert's point park pier.dwg modified by StephenS on 5/8/2020 10:56:43 AM



**NOTES:**  
 1. ALL BEAMS SHALL BE PLACED WITH 1" MINIMUM GAP TO ALLOW FOR EXPANSION AND CONTRACTION.  
 2. ALL SIDEWALK CONSTRUCTION SHALL BEGUN AT A FORMED JOINT OR MUST BE SAWN CUT. ALL TIES TO EXISTING CONCRETE SHALL BE DOWELED WITH #3 BARS AT 12" CENTERS.

**PANELS:**  
 97 TYPE A PANELS  
 3 MODIFIED TYPE A PANELS  
**APPROACH:**  
 10 TYPE B1 BEAMS  
 12 12"x12"x40' CONCRETE PILES  
**PIER:**  
 16 TYPE B1 BEAMS  
 8 TYPE B2 BEAMS  
 17 12"x12"x40' CONCRETE PILES

REV.	BY	DATE	DESCRIPTION

FOR PRELIMINARY REVIEW ONLY  
 NOT FOR CONSTRUCTION  
 03/09/2020  
 SEYMOUR L. SHROBACH, JR., P.E.  
 TEXAS REG. NO. 12299  
 DATE: May, 2020

ROBERT'S POINT PARK PLAN  
 ROBERT'S POINT PARK AND BRANDETT MEMORIAL  
 PIER RECONSTRUCTION PLAN  
 Port Aransas, Texas



SHEET  
 7  
 OF 14  
 JOB NO.  
 06100.B7.15

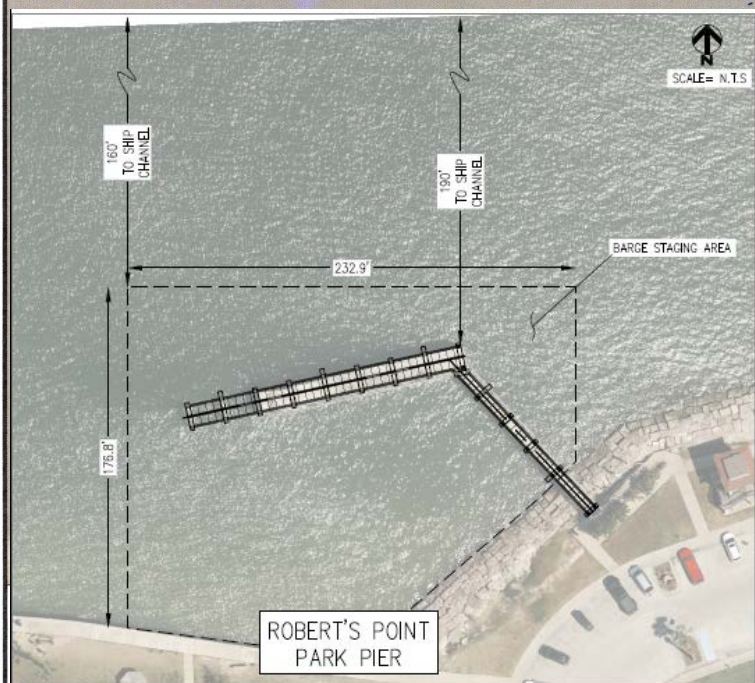
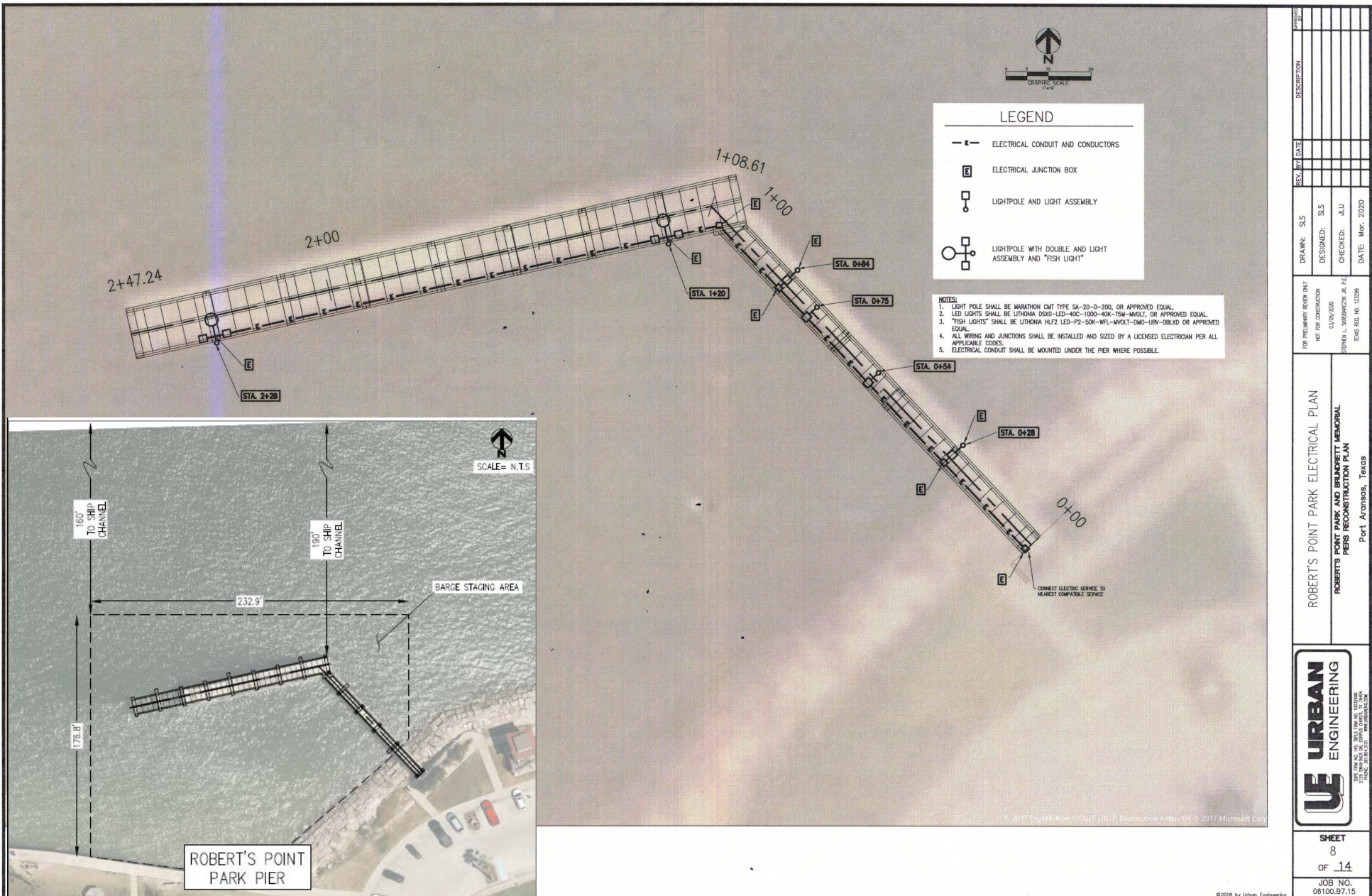
© 2017 DigitalGlobe - CCNEX (3/17) Distribution Airbus DS © 2017 Microsoft Corp

©2017 by Urban Engineering

PROJECT SWG-2019-00349  
 Sheet 2 of 5



s:\projects\060000\Urban\06100\B715\Design\Robert's point pier\_electrical.dwg modified by SLS on 3/19/2020 10:55:04 AM



REV.	BY	DATE	DESCRIPTION

DRAWN: SLS	DESIGNED: SLS	CHECKED: JAU	DATE: Mar. 2020
FOR PRELIMINARY REVIEW ONLY			
NET FOR CONSTRUCTION			
DATE: 03/02/2020	BY: JAU	DATE: 03/02/2020	BY: JAU
URBAN L. SPOONHOF, P.E.			
EISS REG. NO. 112259			

ROBERT'S POINT PARK ELECTRICAL PLAN  
 ROBERT'S POINT PARK AND BRADRETT MEMORIAL  
 PIERS RECONSTRUCTION PLAN  
 Port Aransas, Texas

**URBAN ENGINEERING**  
 2710 AVENUE W. SUITE 1000  
 PORT ARANSAS, TEXAS 78373  
 PHONE: 361.749.1111  
 FAX: 361.749.1112  
 WWW.URBANENGINEERING.COM

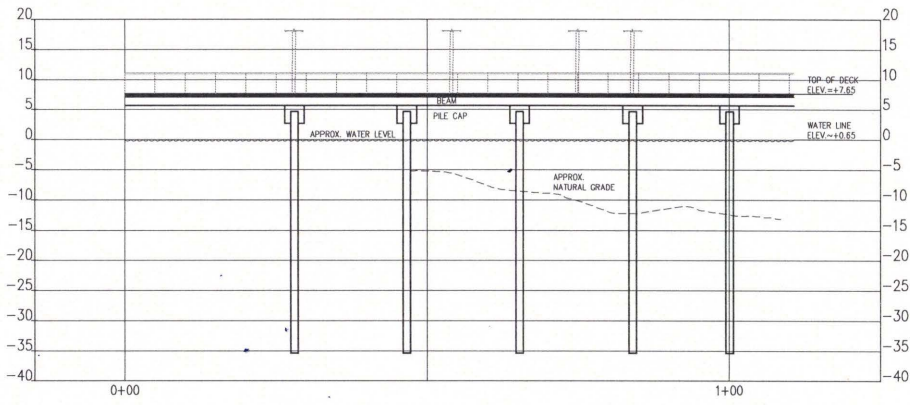
SHEET 8 OF 14  
 JOB NO. 06100.B7.15

PROJECT SWG-2019-00349  
 Sheet 3 of 5

MAY 19 2020

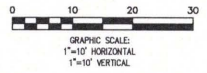


s:\Project\00000000\01010101\01010101\Design\Robert's point park\_pier.dwg modified by StephenS on 4/20/2020 7:07:26 PM

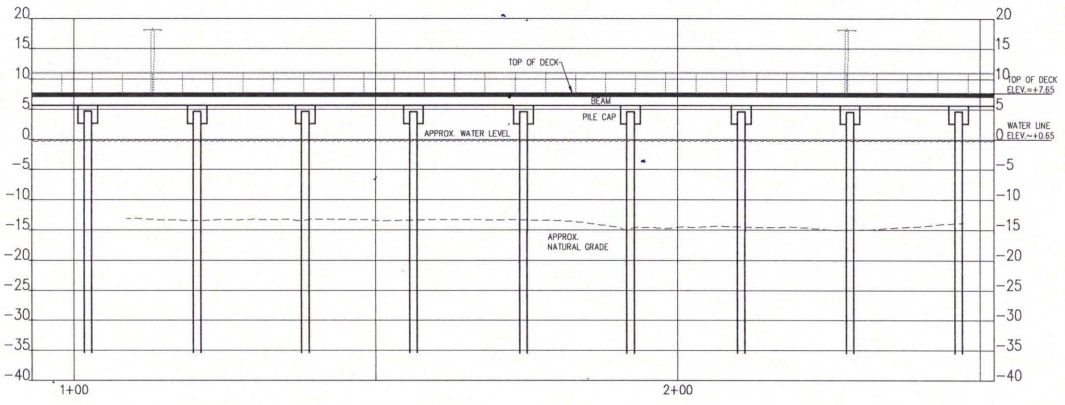


C  
719

ROBERT'S POINT PARK APPROACH PROFILE

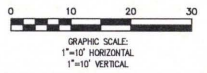


\* CONTRACTOR'S ENGINEER TO DETERMINE PILING DEPTH BASED ON PERFORMANCE SPECIFICATION.



D  
719

ROBERT'S POINT PARK MAIN PIER PROFILE



REV.	BY	DATE	DESCRIPTION

DRAWN: SLS  
 DESIGNED: SLS  
 CHECKED: JLU  
 DATE: Apr. 2020

FOR PRELIMINARY REVIEW ONLY  
 NOT FOR CONSTRUCTION  
 03/29/2020  
 STEPHEN L. SPANDECK, JR., P.E.  
 TEXAS REG. NO. 132599

ROBERT'S POINT PARK PROFILE  
 ROBERT'S POINT PARK AND BRADRETT MEMORIAL  
 PIERS RECONSTRUCTION PLAN  
 Port Aransas, Texas

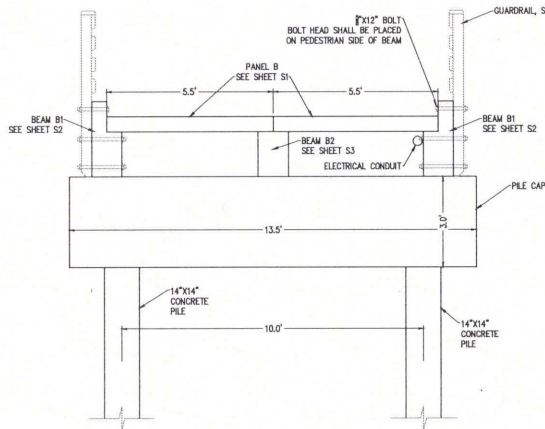


SHEET  
 9  
 OF 14  
 JOB NO.  
 06100.B7.15

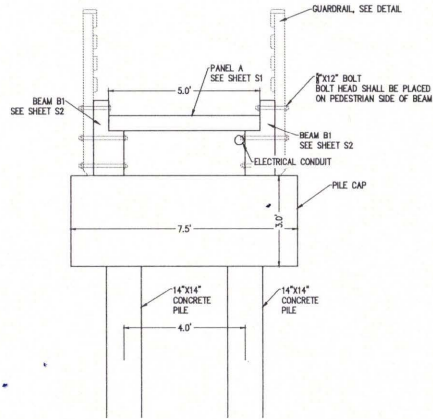
©2017 by Urban Engineering

PROJECT SWG-2019-00349  
 Sheet 4 of 5

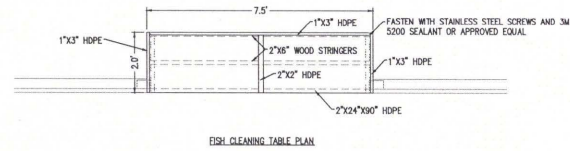
MAY 19 2020



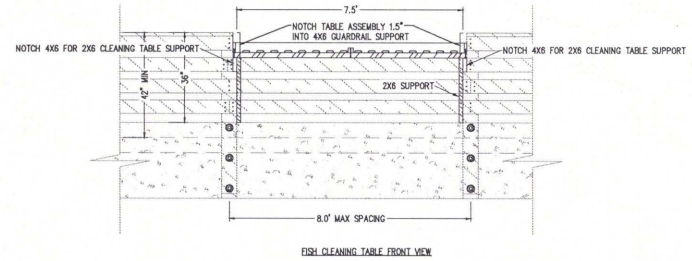
**A**  
316  
PIER SECTION A/B



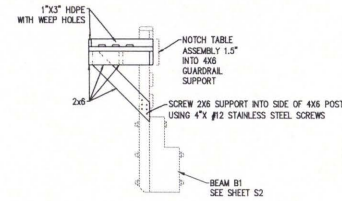
**B**  
316  
PIER SECTION B



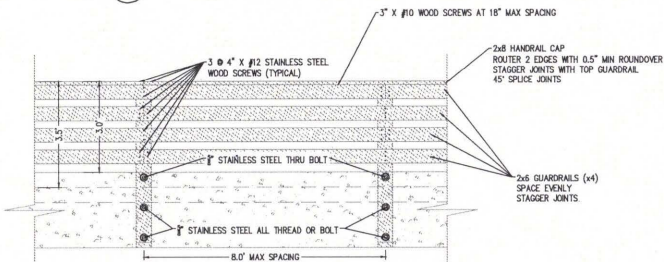
FISH CLEANING TABLE PLAN



FISH CLEANING TABLE FRONT VIEW

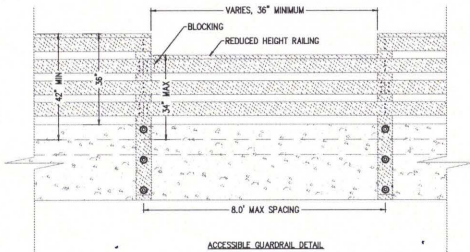


FISH CLEANING TABLE SUPPORT DETAIL



- NOTES:
1. ALL HARDWARE SHALL BE STAINLESS STEEL. ALL BOLTS SHALL BE SECURED WITH LOCK WASHERS AND LOC-TITE, LOCK WASHERS AND LOCK WASHERS, OR APPROVED EQUAL.
  2. GUARD RAIL MUST BE MINIMUM 42\"/>

HANDRAIL DETAIL



ACCESSIBLE GUARDRAIL DETAIL

REV.	DATE	DESCRIPTION

DRAWN: SLS	DESIGNED: SLS	CHECKED: JLU	DATE: Apr. 2020
FOR PRELIMINARY REVIEW ONLY			
NOT FOR CONSTRUCTION			
01/09/2020			
STEPHEN L. BRANDRETT, P.E.			
ENGINE REG. NO. 113299			

ROBERTS POINT PARK DETAILS  
ROBERTS POINT PARK AND BRANDRETT MEMORIAL  
PIERS RECONSTRUCTION PLAN  
Port Aransas, Texas

URBAN ENGINEERING  
1710 AVENUE B, SUITE 100  
PORT ARANSAS, TEXAS 78373  
PH: 361.745.1100  
WWW.URBANENGINEERING.COM

SHEET	10
OF	14
JOB NO.	06100.B7.15

PROJECT SWG-2019-00349  
Sheet 5 of 5

MAX 19 2020

U:\Project\06100.B7.15\Design\Notes\point park pier.dwg modified by: Stephen L. Brandrett on 4/20/2020 7:07:26 PM